

# *we are co*



 **Base**  
feel the comfort 

# INNOVATION IN LINE WITH THE UNITED NATION SUSTAINABLE DEVELOPMENT GOALS

WEARECO IS THE SUSTAINABLE PHILOSOPHY  
DEVELOPED WITH THREE PILLARS IN MIND:  
**ENVIRONMENT, PRODUCT AND PEOPLE.**



## RESPONSIBLE USE AND PRODUCTION

Environmental protection encompasses as aspects of production; the choice of materials, the management of energy resources and the control of waste production.



## HEALTH AND WELLNESS

The health of workers is a fundamental value of Base Protection. The company mission is to produce anti-fatigue, comfortable and light safety shoes. The goal is to improve the life of the worker during professional activities as well as outside work. The result? A more rested worker who is more alert and responsive to dangerous situations. More comfort, more safety.



## DIGNIFIED WORK AND ECONOMIC GROWTH

Base Protection promotes a healthy and stimulating work environment, through corporate management encouraging harmony between people and an atmosphere of collaboration, exchange and respect which contributes to the success of the company.



*weareco*

*RESPONSIBLE PRODUCTION  
AND THE USE  
OF SUSTAINABLE RAW  
MATERIALS ENABLES  
THE DEVELOPMENT  
OF MORE  
ECO-CONSCIOUS  
PRODUCTS.*

*THIS APPROACH  
INCLUDES THE USE  
OF CARDBOARD AND  
WOOD IN OUR PACKAGING  
AND PROMOTIONAL ITEMS.*





# SUSTAINABLE PERFORMANCE

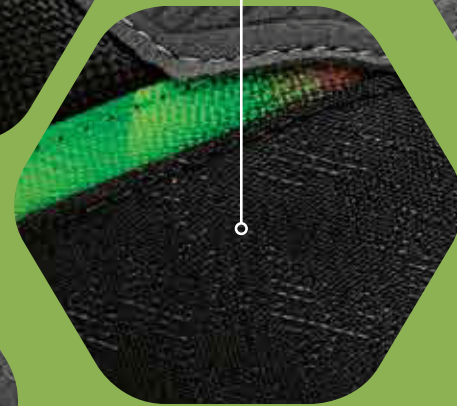
**HEEL INSERT**  
RECYCLED TPU



**MIDSOLE:**  
POLYURETHANE  
OBTAINED FROM BIOMASS  
FROM RENEWABLE  
SOURCES OF  
VEGETABLE ORIGIN



**ANTI-PERFORATION**  
FRESH'N FLEX



**UPPER**  
RECYCLED  
TECHNICAL  
FABRIC

**LINING**  
WEARECO



**TAPES**  
CUSTOM  
RECYCLED PL



**SOLE**  
TPU SKIN MADE WITH  
PRODUCTION WASTE



*Sustainability index is obtained by summing the following parameters:*

- % of recycled materials
- % of materials with lower CO<sub>2</sub> emissions
- % of raw material obtained from biomass

*ALL WEARECO MODELS  
ARE DESIGNED TO OFFER  
THE HIGHEST STANDARDS  
OF SAFETY AND COMFORT.*

*THE SELECTED SUSTAINABLE  
MATERIALS GUARANTEE  
RESISTANCE AND DURABILITY  
OVER TIME.*

**LACE**  
RECYCLED PL



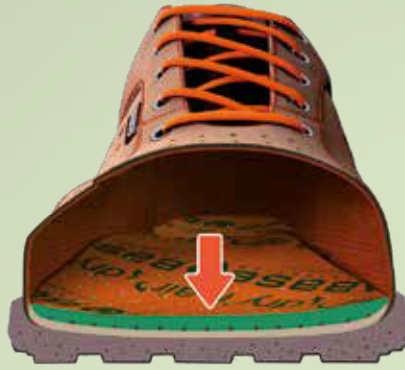
**SLIMCAP TOE**  
SLIMCAP



**MICROFIBRE**  
RECYCLED  
VELOR

*WEARECO FOOTWEAR  
HAS A SUSTAINABLE  
RATING BETWEEN  
67% AND 71% AS A RESULT  
OF THE COMBINATION OF  
MATERIALS USED.*

# PATENTS AND TECHNOLOGIES



## AirTech + tpu-skin®

THE REAL RELAXING SOLE

An exclusive technology, patented by Base Protection, allows the hard and compact thickness of the tread to be reduced to values never before obtained on the market. Result is greater elasticity and cushioning effect.

Anti-fatigue effect and high flexibility of the shoe reducing foot effort and allowing energy saving.



## Dry'n Air®

DRY FOOT SYSTEM

Base Protection patented technology permitting air circulation in the shoe. It can be integrated into the sole (Platinum Line) or into the removable anatomical insole.





# SlimCap

## NON METALLIC TOE

Light, more elastic than metal toe caps, non-magnetic and heat insulating. It guarantees greater comfort without affecting aesthetics. The tip thickness of 6.5 mm is the lowest among all non-metallic tips on the market giving more space for the fingers.

The protective band supplied is perfectly shaped to the tip: the risk of accidental detachment and consequent pressure and pain on the fingers are excluded. It is able to withstand the strongest mechanical stresses required by the EN ISO 20345 and EN 22568 standards.



# SmellStop

## ANTI-ODOR LINING

Anti-odour lining preventing proliferation of microorganisms responsible for bad odors and mycoses. With SmellStop the foot is in good health.

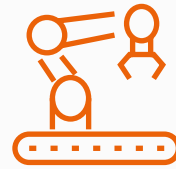
Antibacterial according to EN ISO 20743:2013 standard. Treatment carried out with the biocide Zinc pyrithione (CAS-No. 13463-41-7) of Product Type PT 09 and compliant with regulation 528/2012/EU.



# SECTORS RECOMMENDED

*ALL WEARECO MODELS  
ARE DESIGNED TO  
OFFER THE HIGHEST  
STANDARDS OF SAFETY  
AND COMFORT.*

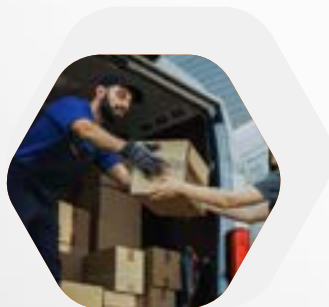
*THE SELECTED SUSTAINABLE  
MATERIALS GUARANTEE  
STRENGTH AND DURABILITY  
OVER TIME.*



*LIGHT  
INDUSTRY*



*HANDCRAFT*



*LOGISTICS*







*The WEARECO line has received the certificate **Carbon Footprint Systematic Approach** pursuant to ISO 14067:2018 from Bureau Veritas. This certificate attests to the **environmental sustainability values of the products** during their entire life cycle.*

*\* Total quantity of emissions produced for 1 pair of European size 42 shoes during the entire life cycle of the product (cradle to grave).*

*Calculation Software: SimaPro 9.5*

*Database: Ecoinvent v 3.9.1*

*CFP-PCR/Reference PCR: PCR "LEATHER FOOTWEAR" version 2.11*



# B0666B YELLOWSTONE

\*10,10 kg CO<sub>2</sub>eq 



**S3S FO ESD SR** | SIZES 35-48



**UPPER**  
Technical Fabric

**LINING**  
SmellStop anti-odor and antibacterial\*

**INSERT**  
Fresh'n Flex

**TOE CAP**  
Slimcap

**SOLE**  
AirTech+Tpu-Skin anti-fatigue

**YELLOWSTONE  
NATIONAL PARK  
UNITED STATES**

**UNESCO  
WORLD HERITAGE**

B0667B  
**YELLOWSTONE TOP**



\* 10,41 kg CO<sub>2</sub>eq



**S3S FO ESD SR** | SIZES 35-48



**UPPER**

Technical Fabric

**LINING**

SmellStop anti-odor and antibacterial\*

**INSERT**

Fresh'n Flex

**TOE CAP**

Slimcap

**SOLE**

AirTech+Tpu-Skin anti-fatigue



B0666C  
**TULUM**

\*10,58 kg CO<sub>2</sub> eq



**S1PS FO ESD SR** | TAGLIE 35-48



**UPPER**  
Technical Fabric

**LINING**  
SmellStop anti-odor and antibacterial\*

**INSERT**  
Fresh'n Flex

**TOE CAP**  
Slimcap

**SOLE**  
AirTech+Tpu-Skin anti-fatigue

TULUM  
NATIONAL PARK  
MEXICO

B0668A  
**KOMODO**



\*10,62 kg CO<sub>2</sub>eq 



**S1PS FO ESD SR** | SIZES 35-48



**UPPER**

Technical Fabric

**LINING**

SmellStop anti-odor and antibacterial\*

**INSERT**

Fresh'n Flex

**TOE CAP**

Slimcap

**SOLE**

AirTech+Tpu-Skin anti-fatigue



**KOMODO  
NATIONAL PARK  
INDONESIA**

B0666A  
**GRAND CANYON**

\*10,17 kg CO<sub>2</sub>eq 



**S1PS FO ESD SR** | SIZES 35-48



**UPPER**  
Technical Fabric

**LINING**  
SmellStop anti-odor and antibacterial\*

**INSERT**  
Fresh'n Flex

**TOE CAP**  
Slimcap

**SOLE**  
AirTech+Tpu-Skin anti-fatigue

GRAND CANYON  
NATIONAL PARK  
UNITED STATES

B0667A

# GRAND CANYON TOP



\*10,51 kg CO<sub>2</sub>eq



**S1PS FO ESD SR** | SIZES 35-48



## UPPER

Technical Fabric

## LINING

SmellStop anti-odor and antibacterial\*

## INSERT

Fresh'n Flex

## TOE CAP

Slimcap

## SOLE

AirTech+Tpu-Skin anti-fatigue





**Base Protection Srl Unipersonale**

Italy - 76121 Barletta (BT)  
Via dell'Unione Europea, 61  
T +39 0883 334811  
F +39 0883 334824  
E [info@baseprotection.com](mailto:info@baseprotection.com)  
W [www.baseprotection.com](http://www.baseprotection.com)



CONFINDUSTRIA