

we are co



 **Base**
feel the comfort 

INNOVATION IN LINE WITH THE UNITED NATION SUSTAINABLE DEVELOPMENT GOALS

WEARECO IS THE SUSTAINABLE PHILOSOPHY
DEVELOPED WITH THREE PILLARS IN MIND:
ENVIRONMENT, PRODUCT AND PEOPLE.



RESPONSIBLE USE AND PRODUCTION

Environmental protection encompasses as aspects of production; the choice of materials, the management of energy resources and the control of waste production.



HEALTH AND WELLNESS

The health of workers is a fundamental value of Base Protection. The company mission is to produce anti-fatigue, comfortable and light safety shoes. The goal is to improve the life of the worker during professional activities as well as outside work. The result? A more rested worker who is more alert and responsive to dangerous situations. More comfort, more safety.



DIGNIFIED WORK AND ECONOMIC GROWTH

Base Protection promotes a healthy and stimulating work environment, through corporate management encouraging harmony between people and an atmosphere of collaboration, exchange and respect which contributes to the success of the company.



weareco

*RESPONSIBLE PRODUCTION
AND THE USE
OF SUSTAINABLE RAW
MATERIALS ENABLES
THE DEVELOPMENT
OF MORE
ECO-CONSCIOUS
PRODUCTS.*

*THIS APPROACH
INCLUDES THE USE
OF CARDBOARD AND
WOOD IN OUR PACKAGING
AND PROMOTIONAL ITEMS.*





SUSTAINABLE PERFORMANCE

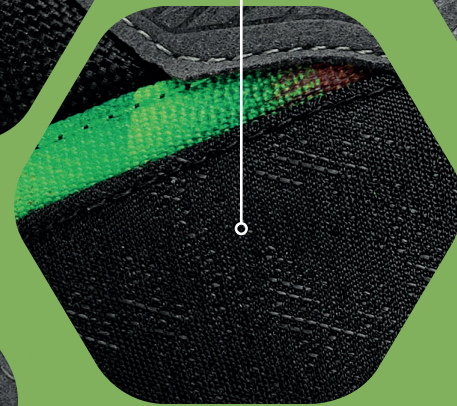
HEEL INSERT
RECYCLED TPU



MIDSOLE:
POLYURETHANE
OBTAINED FROM BIOMASS
FROM RENEWABLE
SOURCES OF
VEGETABLE ORIGIN

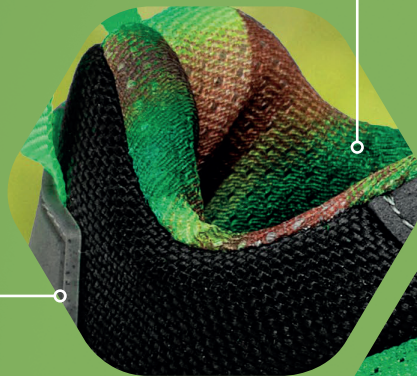


ANTI-PERFORATION
FRESH'N FLEX



UPPER
RECYCLED
TECHNICAL
FABRIC

LINING
WEARECO



TAPES
CUSTOM
RECYCLED PL



SOLE
TPU SKIN MADE WITH
PRODUCTION WASTE



Sustainability index is obtained by summing the following parameters:

- % of recycled materials
- % of materials with lower CO₂ emissions
- % of raw material obtained from biomass

*ALL WEARECO MODELS
ARE DESIGNED TO OFFER
THE HIGHEST STANDARDS
OF SAFETY AND COMFORT.*

*THE SELECTED SUSTAINABLE
MATERIALS GUARANTEE
RESISTANCE AND DURABILITY
OVER TIME.*

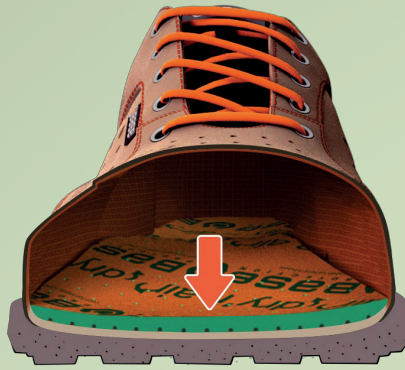
LACE
RECYCLED PL

SLIMCAP TOE
SLIMCAP

MICROFIBRE
RECYCLED
VELOR

*WEARECO FOOTWEAR
HAS A SUSTAINABLE
RATING BETWEEN
67% AND 71% AS A RESULT
OF THE COMBINATION OF
MATERIALS USED.*

PATENTS AND TECHNOLOGIES

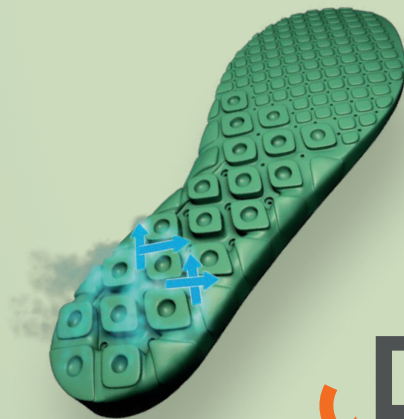


AirTech + tpu-skin®

THE REAL RELAXING SOLE

An exclusive technology, patented by Base Protection, allows the hard and compact thickness of the tread to be reduced to values never before obtained on the market. Result is greater elasticity and cushioning effect.

Anti-fatigue effect and high flexibility of the shoe reducing foot effort and allowing energy saving.



Dry'n Air®

DRY FOOT SYSTEM

Base Protection patented technology permitting air circulation in the shoe. It can be integrated into the sole (Platinum Line) or into the removable anatomical insole.





SlimCap

NON METALLIC TOE

Light, more elastic than metal toe caps, non-magnetic and heat insulating. It guarantees greater comfort without affecting aesthetics. The tip thickness of 6.5 mm is the lowest among all non-metallic tips on the market giving more space for the fingers.

The protective band supplied is perfectly shaped to the tip: the risk of accidental detachment and consequent pressure and pain on the fingers are excluded. It is able to withstand the strongest mechanical stresses required by the EN ISO 20345 and EN 22568 standards.



SmellStop

ANTI-ODOR LINING

Anti-odour lining preventing proliferation of microorganisms responsible for bad odors and mycoses. With SmellStop the foot is in good health.

Antibacterial according to EN ISO 20743:2013 standard. Treatment carried out with the biocide Zinc pyrithione (CAS-No. 13463-41-7) of Product Type PT 09 and compliant with regulation 528/2012/EU.



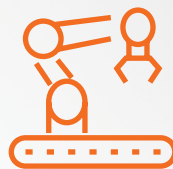
**SECTORS
RECOMMENDED**



***ALL WEARECO MODELS
ARE DESIGNED TO
OFFER THE HIGHEST
STANDARDS OF SAFETY
AND COMFORT.***

*THE SELECTED SUSTAINABLE
MATERIALS GUARANTEE
STRENGTH AND DURABILITY
OVER TIME.*





*LIGHT
INDUSTRY*



HANDCRAFT



LOGISTICS

B0666B
YELLOWSTONE

*8,84 kg CO₂ eq



S3S FO ESD SR | SIZES 35-48



UPPER
Technical Fabric

LINING
SmellStop anti-odor and antibacterial*

INSERT
Fresh'n Flex

TOE CAP
Slimcap

SOLE
AirTech+Tpu-Skin anti-fatigue

YELLOWSTONE
NATIONAL PARK
UNITED STATES

UNESCO
WORLD HERITAGE

B0667B
YELLOWSTONE TOP



*9,16 kg CO₂ eq



S3S FO ESD SR | SIZES 35-48



UPPER

Technical Fabric

LINING

SmellStop anti-odor and antibacterial*

INSERT

Fresh'n Flex

TOE CAP

Slimcap

SOLE

AirTech+Tpu-Skin anti-fatigue



B0666C
TULUM

*9,32 kg CO₂ eq



S1PS FO ESD SR | TAGLIE 35-48



UPPER
Technical Fabric

LINING
SmellStop anti-odor and antibacterial*

INSERT
Fresh'n Flex

TOE CAP
Slimcap

SOLE
AirTech+Tpu-Skin anti-fatigue

TULUM
NATIONAL PARK
MEXICO

B0668A
KOMODO



*9,36 kg CO₂ eq



S1PS FO ESD SR | SIZES 35-48



UPPER

Technical Fabric

LINING

SmellStop anti-odor and antibacterial*

INSERT

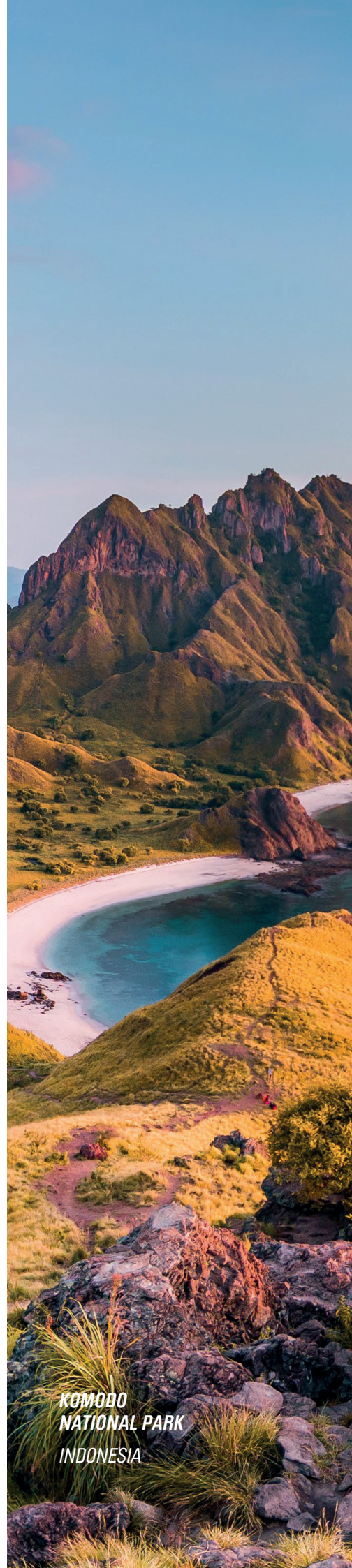
Fresh'n Flex

TOE CAP

Slimcap

SOLE

AirTech+Tpu-Skin anti-fatigue



KOMODO
NATIONAL PARK
INDONESIA

B0666A
GRAND CANYON

*8,91 kg CO₂ eq



S1PS FO ESD SR | SIZES 35-48



UPPER
Technical Fabric

LINING
SmellStop anti-odor and antibacterial*

INSERT
Fresh'n Flex

TOE CAP
Slimcap

SOLE
AirTech+Tpu-Skin anti-fatigue

GRAND CANYON
NATIONAL PARK
UNITED STATES

B0667A
GRAND CANYON TOP



*9,26 kg CO₂ eq 



S1PS FO ESD SR | SIZES 35-48



UPPER

Technical Fabric

LINING

SmellStop anti-odor and antibacterial*

INSERT

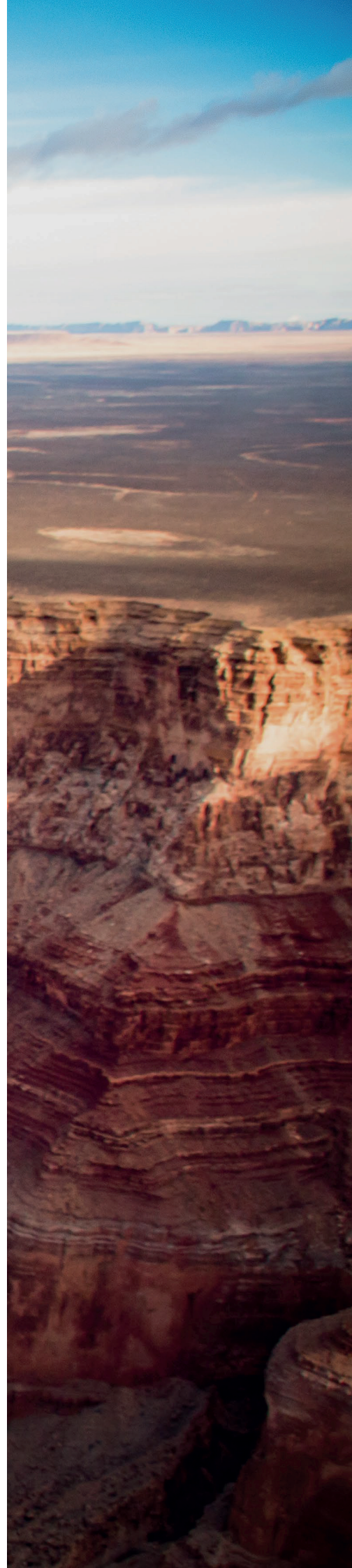
Fresh'n Flex

TOE CAP

Slimcap

SOLE

AirTech+Tpu-Skin anti-fatigue





Base Protection Srl Unipersonale

Italy - 76121 Barletta (BT)
Via dell'Unione Europea, 61
T +39 0883 334811
F +39 0883 334824
E info@baseprotection.com
W www.baseprotection.com



CONFINDUSTRIA